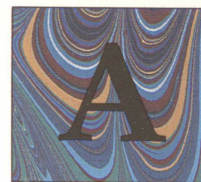


**CLASSIC**  
**COLLECTION**  
AT THE LAKES



*very special limited collection of new, single-family residences that provide a haven of tranquility to this prestigious neighborhood.*

*In a uniquely semi-rural environment, homeowners will find seclusion from everyday concerns...time to rest, time to dream, and time to enjoy life.*

*Attractive exterior styles complement four light and airy floorplans, enhanced by volume ceilings and an abundance of sparkling windows.*

*Showcased by exquisite detailing, these three and four bedroom luxury homes have been finely crafted by Covington Homes and Pacific Southwest Development--skilled builders with more than thirty years of experience.*

*Welcome to The Classic Collection...where sophisticated styling combine with an exceptional secluded location to provide unparalleled residential excellence.*

## Quality Features

*...to enhance your living environment*

### INTERIOR FEATURES

- Dual zoned heating and air conditioning
- Elegant staircase with hand-stained oak bannisters
- Distinctive Thermal-tru double entry doors with polished brass hardware
- Colonist raised panel interior doors
- Deluxe polished brass lever interior door hardware
- Spacious family room with woodburning fireplace
- Designer selected lighting fixtures
- Wet bar with oak cabinetry (plan 1)
- Dramatic volume ceilings
- Designer potshelves
- Custom round cornerbead throughout
- Custom textured ceilings
- Generous oak linen cabinets
- Plush nylon carpeting
- Ceramic tile entry
- Designer vinyl flooring in kitchen, secondary baths and laundry
- Colonist raised panel sliding wardrobe doors

### EXTERIOR DETAILING

- Up to four car garage with direct interior access
- Sectional metal roll-up garage doors
- Concrete tile roofs
- Lighted and covered entries

- Concrete driveway and walkway
- Rear and side yard concrete block fencing
- Front yard landscaping with sprinklers

### GOURMET KITCHENS

- Four burner built-in gas gourmet cooktop
- Built-in self-cleaning electric oven
- Built-in microwave oven
- Multi-cycle dishwasher
- Breakfast nook with ceiling fan and light fixture
- Hand-set ceramic tile countertops
- Convenient built-in pantry
- Hand-finished distinctive oak cabinetry
- Deluxe waste disposal unit
- Water line plumbed for automatic icemaker
- Luminous ceiling

### MASTER SUITES

- Dual entry doors
- Impressive vaulted ceiling
- Spacious walk-in closets
- Elegant cultured marble vanity top
- Dual designer basins
- Oval bathtub with ceramic tile surrounds
- Separate stall shower with ceramic tile and glass enclosure
- Hand-finished oak cabinets
- Deluxe widespread chrome fixtures
- Full-width mirror over pullmans

### ENERGY SAVING AND CONVENIENCE APPOINTMENTS

- Dual paned windows
- Energy-efficient 50 gallon water heater
- R-30 ceiling insulation
- R-19 wall insulation
- Smoke detector protection
- Pre-wired for security alarm, telephone, and cable television
- 220 volt electrical outlet plus gas outlet for clothes dryer
- Long-life copper water system
- Air condensor ground mounted
- Plumbed for water softener loop
- Pre-wired for garage door opener

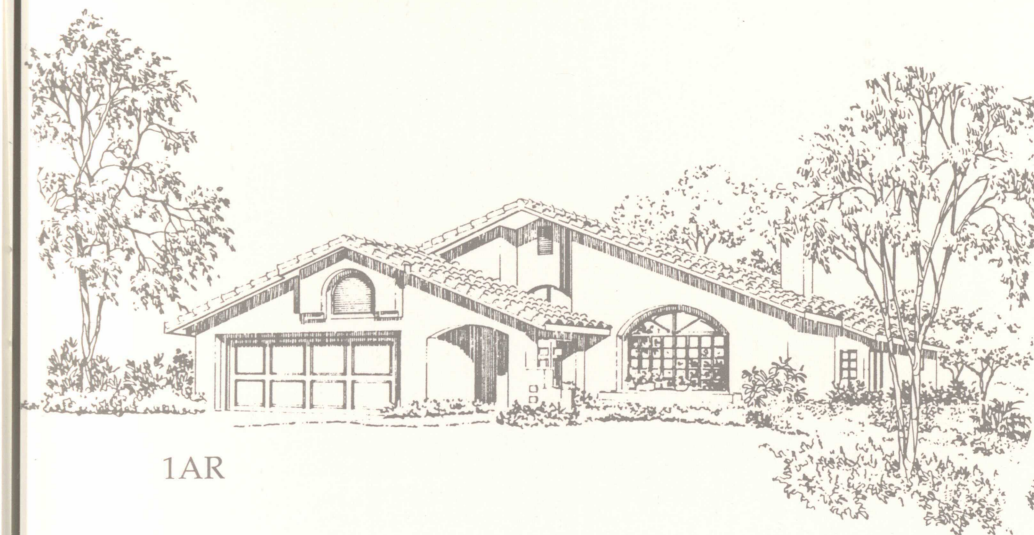
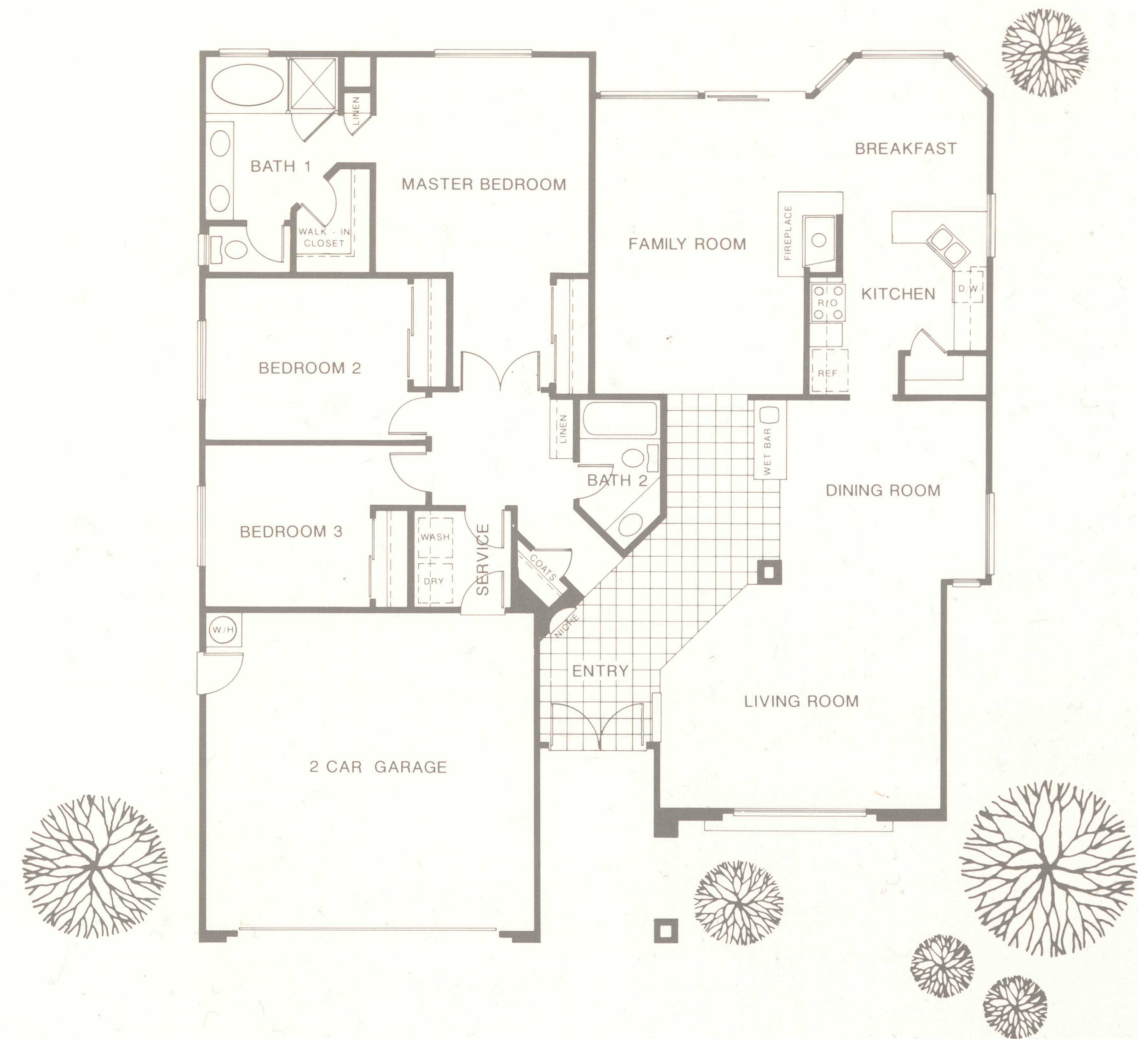
### AVAILABLE OPTIONS

- Upgraded carpeting and hard surface flooring
- Tub enclosures in secondary baths
- Mirrored wardrobe doors
- Spa tub in master bath
- Fireplace in master bedroom and living room

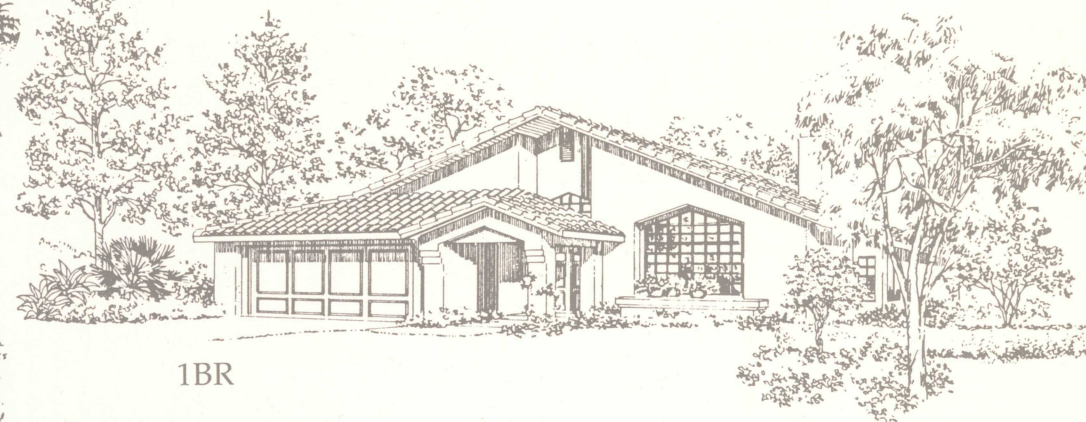
Due to our ongoing program of research and development, Covington Homes and Pacific Southwest Development reserve the right to change products and design, features, prices, or terms, without notice or obligation. Please contact your sales counselor for additional information. Renderings are an artist conception and square footages are approximate.

PLAN ONE  
**The Classic**

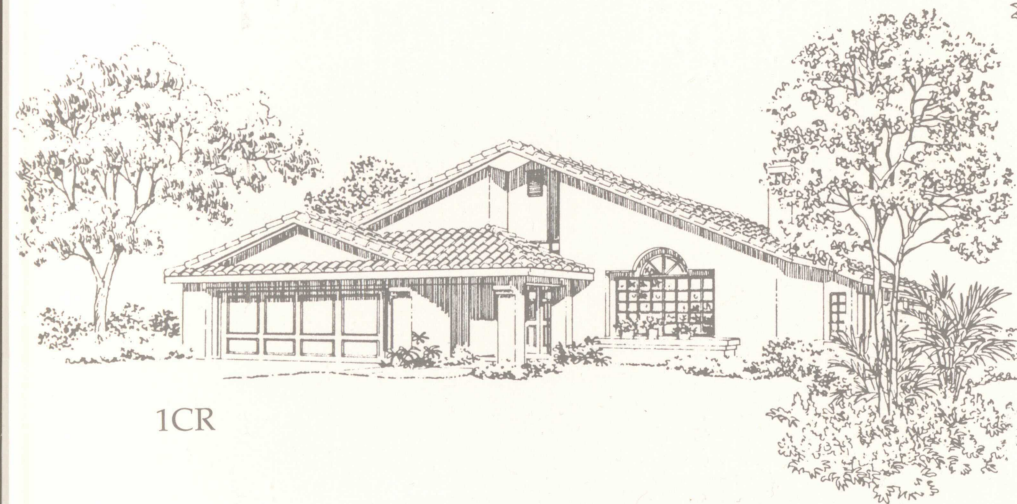
Single story, three bedrooms, two baths, master suite, living room, family room with fireplace, wet bar, breakfast nook, attached two or three car garage.  
 Approximately 1,900 square feet.



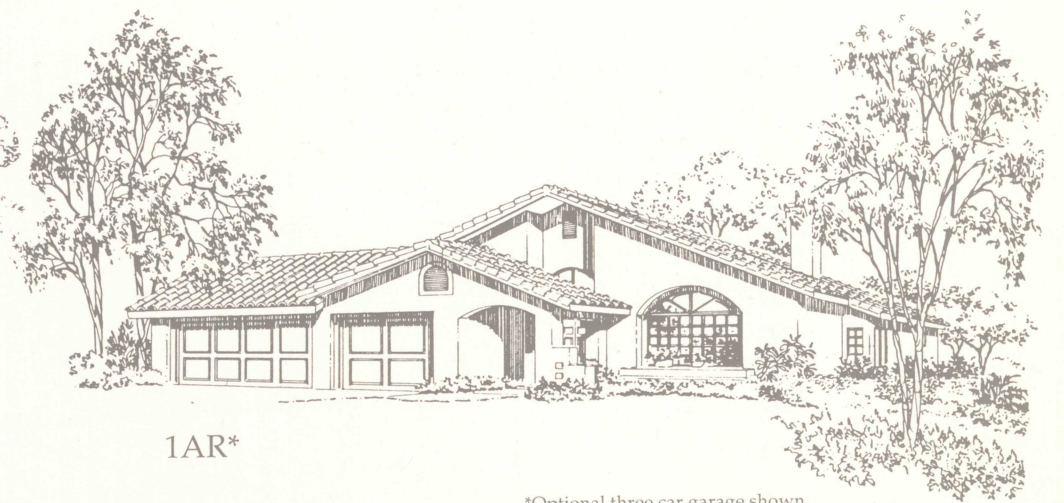
1AR



1BR



1CR



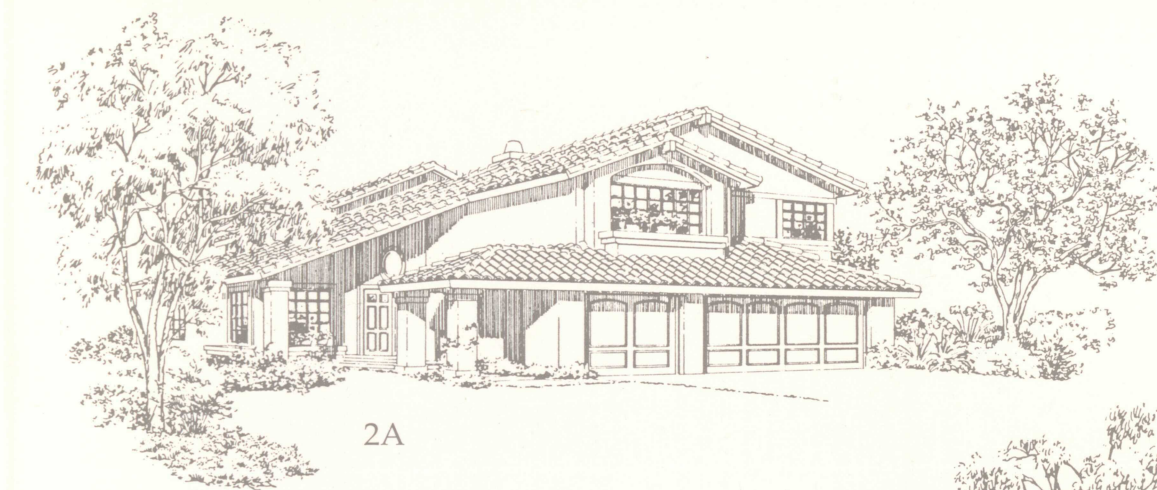
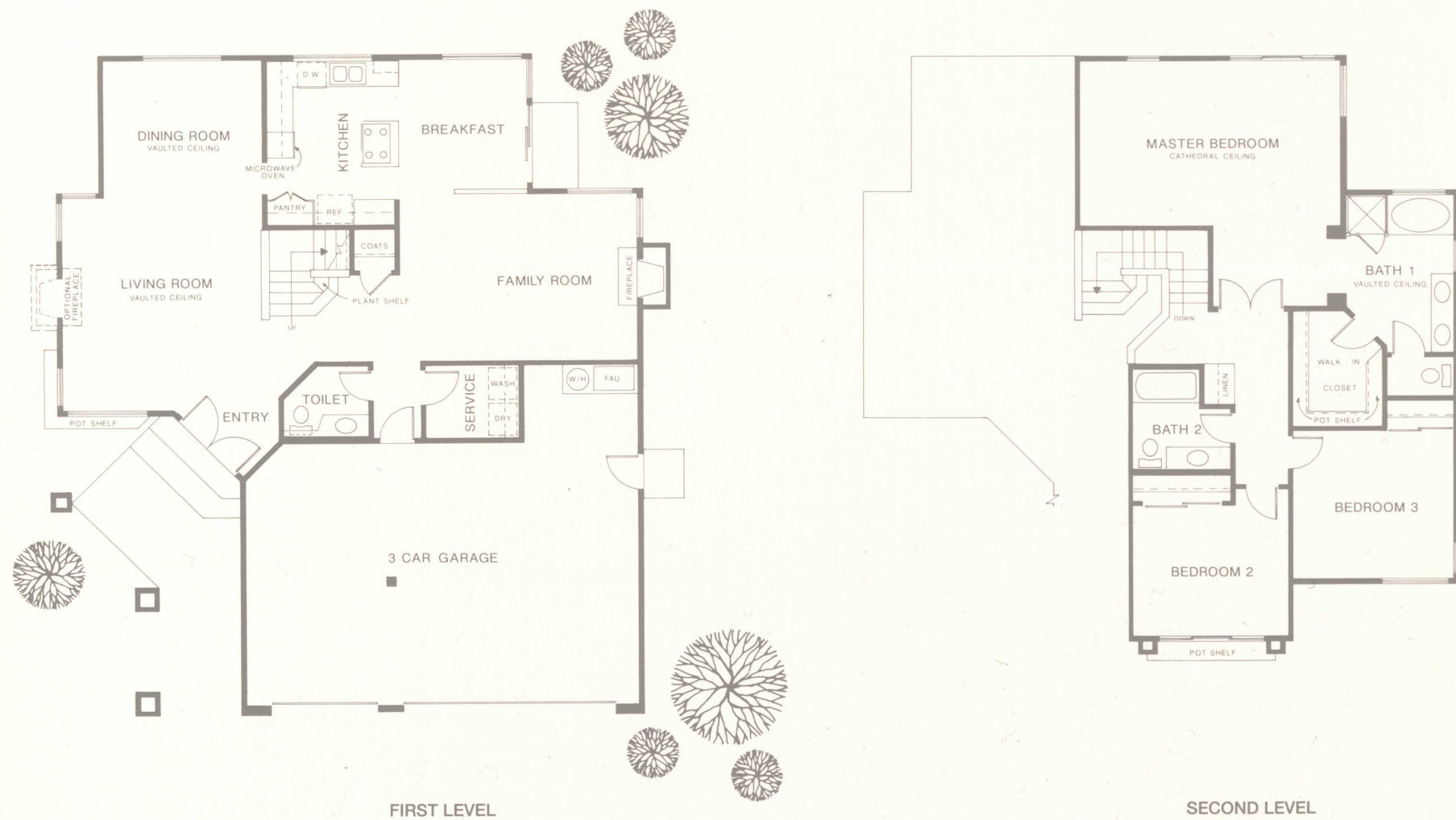
1AR\*

Renderings are artist's conceptions

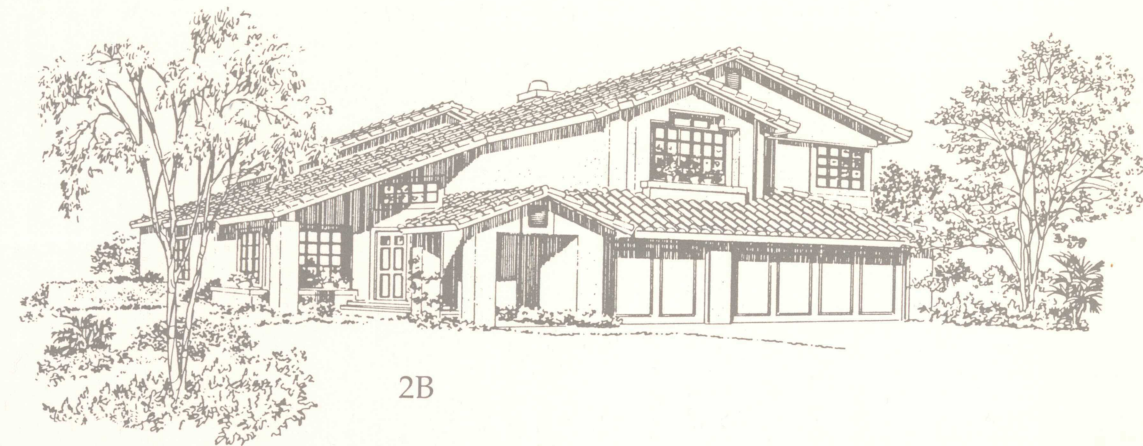
\*Optional three car garage shown

PLAN TWO  
**The Legend**

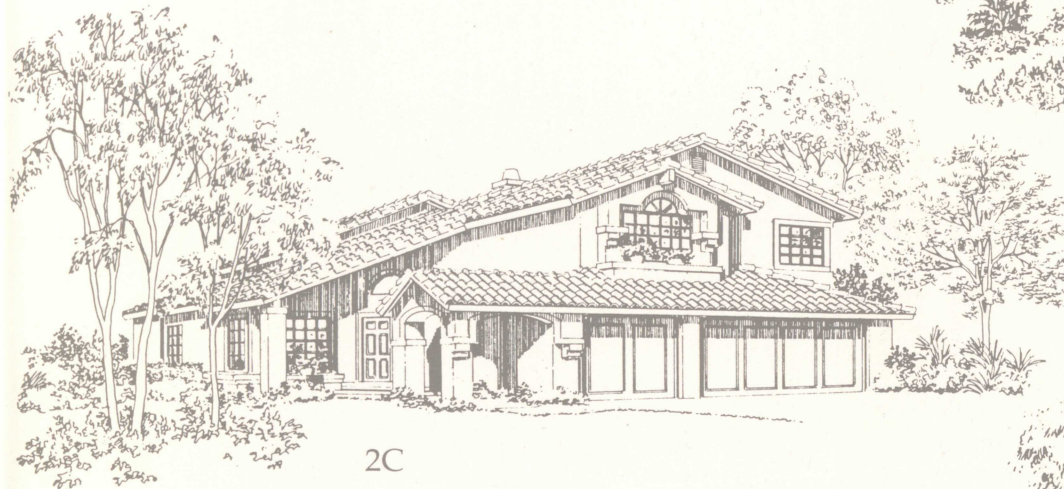
*Two story, three bedrooms, two-and-one-half baths, master suite, living room with optional fireplace, formal dining room, family room with fireplace, breakfast nook, attached three or four car garage. Approximately 2,100 square feet.*



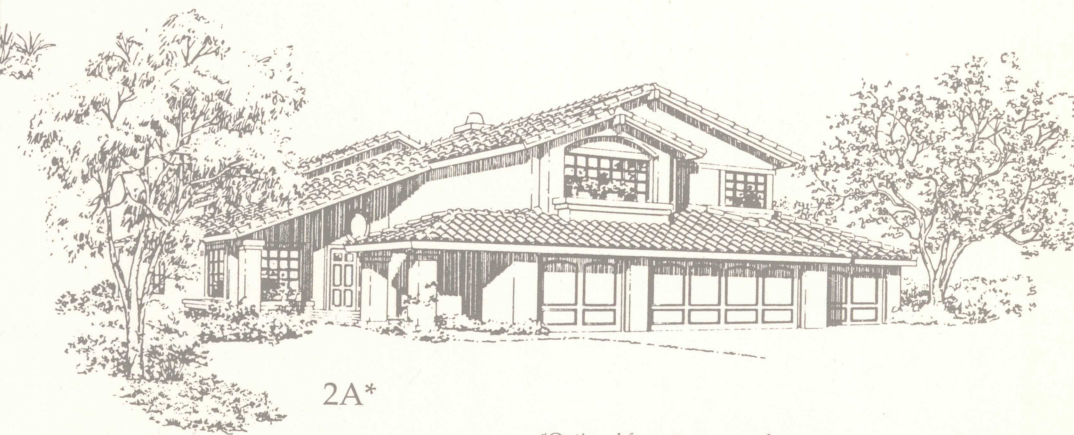
2A



2B



2C



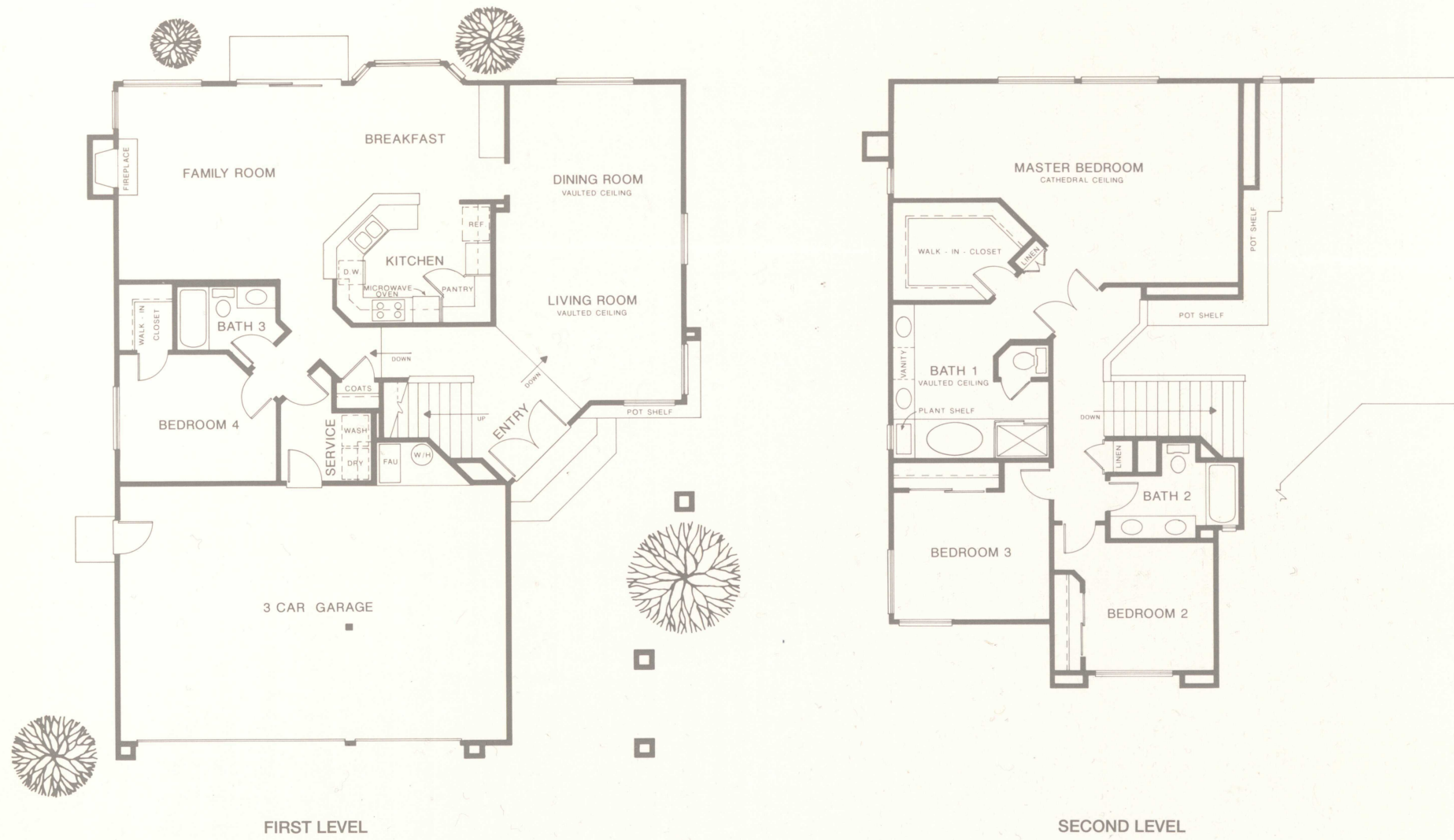
2A\*

Renderings are artist's conceptions

\*Optional four car garage shown

PLAN THREE  
**The Heritage**

*Two story, four bedrooms, three baths, optional den, master suite with optional fireplace, living room, dining room, family room with fireplace, breakfast nook, attached three or four car garage. Approximately 2,425 square feet.*

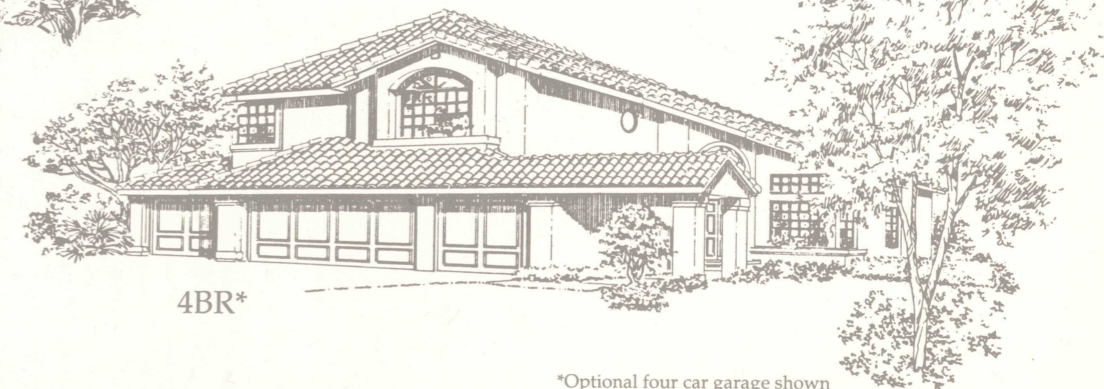
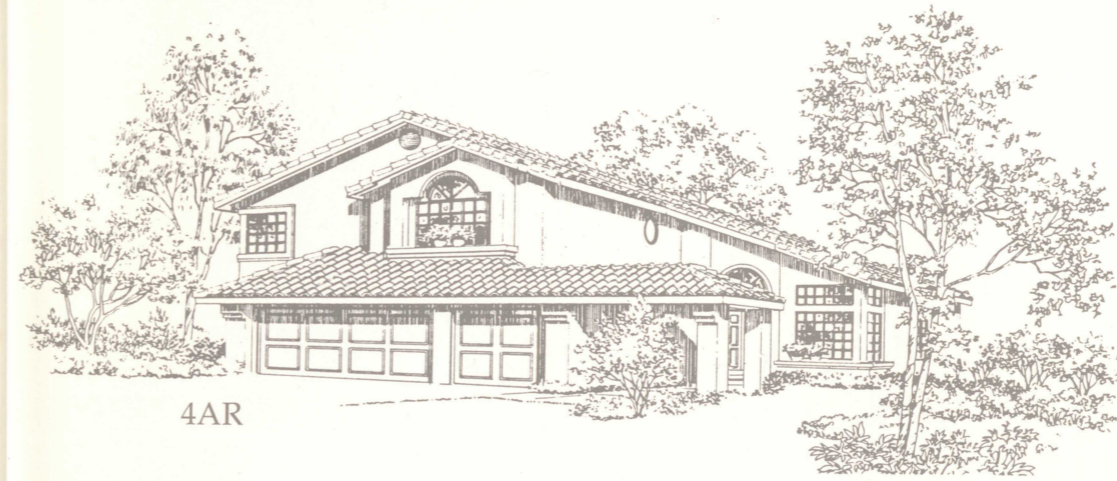
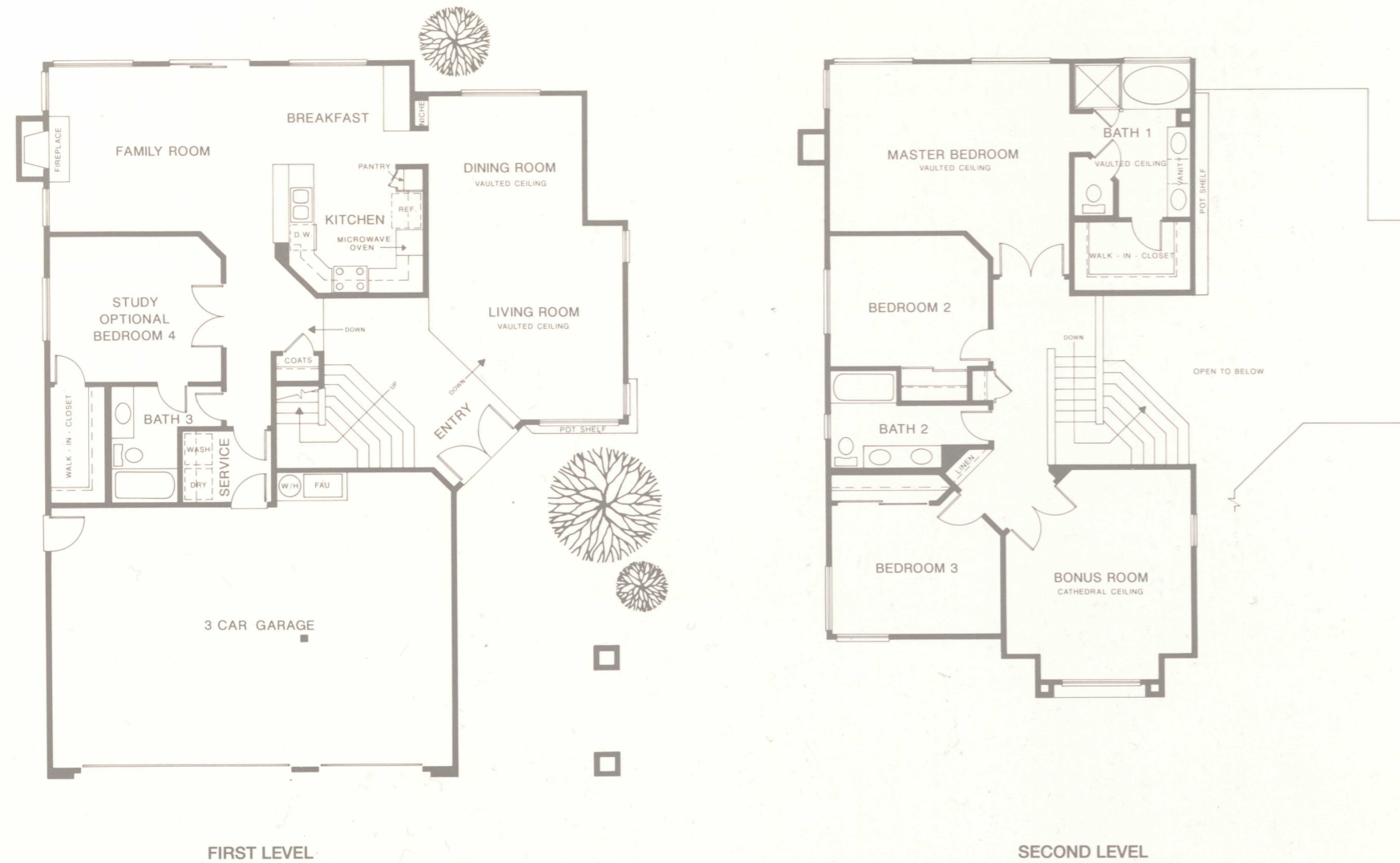


Renderings are artist's conceptions

\*Optional four car garage shown

PLAN FOUR  
**The Vintage**

Two story, four bedrooms, three baths, optional study, master suite, living room, dining room, family room with fireplace, bonus room, breakfast nook, three or four car garage. Approximately 2,510 square feet.



Renderings are artist's conceptions

\*Optional four car garage shown

# Builder Story

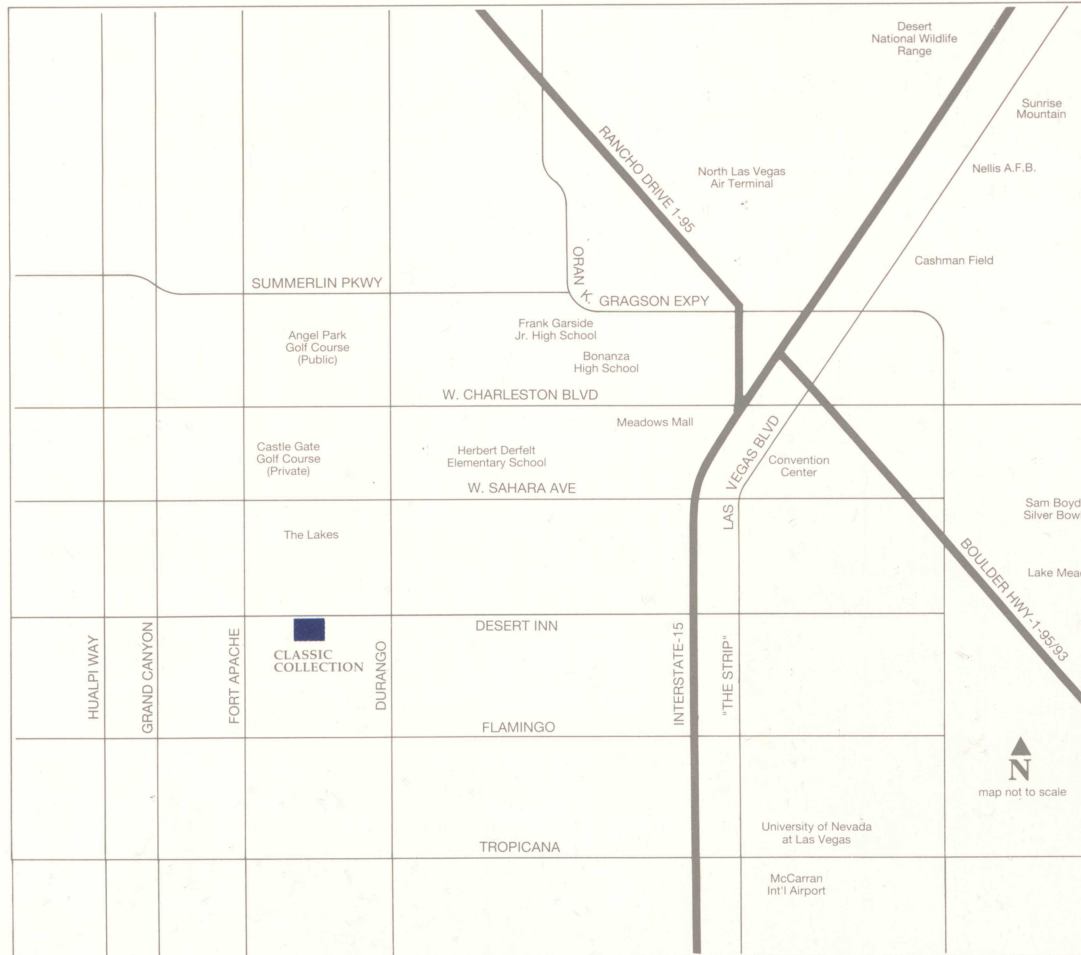
With more than 30 years of development experience, Pacific Southwest Development and Covington Homes have built quality homes and communities for thousands of satisfied homeowners throughout the Southwest.

Over the years, the developers of the Classic Collection have developed and maintained a solid reputation for providing value to homebuyers through thoughtful design, planning, and attention to the

smallest detail.

This dedication to quality homebuilding has resulted in many top awards and honors from the National Association of Homebuilders, Building Industry Association, and Professional Builder Magazine.

Commitment to quality, backed by 30 years of experience in the homebuilding industry are the developers' key to providing you with quality and the finest new home value available today.



3314 Royal Bay Drive  
Las Vegas, Nevada  
(702) 363-1406

A development of Covington Homes and Pacific Southwest Development

